

Leader

ZEN SERIES

The ZEN series LV5600 / LV5300 (WAVEFORM MONITOR), LV7600 / LV7300 (RASTERIZER) are media measurement monitors to easily address all of your video and audio signals. With both integrated and remote monitor form factors available, you can select the model suited to the installation location. Designed with the future in mind, the family supports up to 12G-SDI as well as video over IP interfaces. Measurement and quality control of each video signal is straightforward with waveform, vector, picture and eye pattern displays. Comprehensive status displays, error logs and long-term trend views help you ensure stability and troubleshoot your system. The Zen family also offer complete audio monitoring, whether discrete digital and analog, or embedded. Available audio monitoring views include multi-channel level metering, Lissajous and status displays, and loudness measurement.

2K/4K/IP/4 INPUT WAVEFORM MONITOR LV5600

4K	12GSDI	6GSDI	3GSDI
HDSDI	SDSDI	IP	EYE



Display Size: 7 inches
Dimensions (WHD mm) 215x132x298
(3U ½ Rack size)



2K/4K/IP/4 INPUT RASTERIZER LV7600

4K	12GSDI	6GSDI	3GSDI
HDSDI	SDSDI	IP	EYE



Dimensions (WHD mm) : 426x44x300
(1U Full Rack size)



2K/4K/2 INPUT WAVEFORM MONITOR LV5300

4K	12GSDI	6GSDI	3GSDI
HDSDI	SDSDI	EYE	



EYE Pattern
Display Size: 7 inches
Dimensions (WHD mm) : 215x132x120 (3U ½ Rack size)
Power supply: DC10V~DC18V



2K/4K/2 INPUT WAVEFORM MONITOR LV5350

4K	12GSDI	6GSDI	3GSDI
HDSDI	SDSDI		



Display Size: 7 inches
Dimensions (WHD mm) : 215x85 x120 (3U ½ Rack size)
Power supply: DC10V~DC18V



2K/4K/2 INPUT RASTERIZER LV7300

4K	12GSDI	6GSDI	3GSDI
HDSDI	SDSDI	EYE	



Dimensions (WHD mm) : 215x44x300 (1U 1/2 Rack size)
Power supply : DC10V~DC18V



REMOTE CONTROLLER LV7290

Enables long distance operation through Ethernet
Controls up to 8 units from one controller
Dimensions (WHD mm) : 482x44x110
(1U Full Rack size)



ZEN SERIES OPTION

■ LV5600/ LV7600 Hardware options

Description	Model		Function
	LV5600	LV7600	
SDI INPUT	LV5600-SER01		SD,HD,3G SDI input *1
SDI INPUT/EYE	LV5600-SER02		SD,HD,3G SDI input and EYE pattern display *1
DIGI/ANA AUDIO	LV5600-SER03	LV7600-SER03	Digital/ Analog audio input & output display
DOLBY	LV5600-SER04	LV7600-SER04	Dolby Digital, Dolby E decode function *2
IP INPUT	LV5600-SER05	LV7600-SER05	IP input *1

*1 A minimum of one of LV5600-SER01, LV5600-SER02 or LV5600-SER05 required for LV5600

A minimum of one of LV5600-SER01, LV5600-SER02 or LV7600-SER05 required for LV7600

*2 Requires LV5600-SER03 for LV5600, LV7600-SER03 for LV7600

■ LV5600/ LV7600 Software options

Description	Model		Function
	LV5600	LV7600	
HDR	LV5600-SER23	LV7600-SER23	HDR measurement
TSG	LV5600-SER24	LV7600-SER24	SDI signal generation
FOCUS ASSIST	LV5600-SER25	LV7600-SER25	Focus assist display
LAYOUT (Custom layout / Display assignment)	LV5600-SER26	LV7600-SER26	Customized layout /Display assignment function
TALLY	LV5600-SER27	LV7600-SER27	Tally display
4K	LV5600-SER28	LV7600-SER28	4K image signal support function
12G-SDI	LV5600-SER29	LV7600-SER29	12G-SDI / 6G-SDI *
VIDEO NOISE METER	LV5600-SER30	LV7600-SER30	Camera S/N measurement
EXTEND VECTOR	LV5600-SER40	LV7600-SER40	RGB Vector , YCbCr Vector

* LV5600-SER28 also required for LV5600. LV7600-SER28 also required for LV7600.

■ LV5300/ LV5350/ LV7300 Hardware options

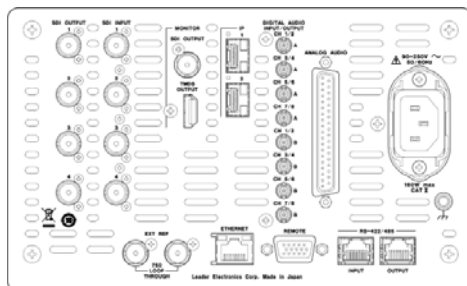
Description	Model			Function
	LV5300	LV5350	LV7300	
SDI INPUT	—	Standard feature	LV7300-SER01	SD,HD,3G SDI input *1
SDI INPUT/EYE	Standard feature	—	LV7300-SER02	SD,HD,3G SDI input and EYE pattern display *1
BATTERY ADAPTER V MOUNT	LV5300-SER11	LV5350-SER11	—	V mount type battery adapter
BATTERY ADAPTER QR GOLD	LV5300-SER12	LV5350-SER12	—	QR gold mount type battery adapter

*1 Either LV7300-SER01 or LV7300-SER02 is required for LV7300.

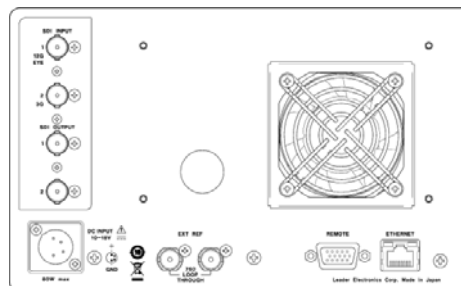
■ LV5300/ LV5350/ LV7300 Software options

Description	Model			Function
	LV5300	LV5350	LV7300	
AUDIO	LV5300-SER20	LV5350-SER20	LV7300-SER20	AUDIO display
CLOSED CAPTION	LV5300-SER21	LV5350-SER21	LV7300-SER21	EIA-608, 708, TELETEXT, Japanese subtitle display
CIE	LV5300-SER22	LV5350-SER22	LV7300-SER22	CIE Chart display
HDR	LV5300-SER23	LV5350-SER23	LV7300-SER23	HDR measurement
TSG	LV5300-SER24	LV5350-SER24	LV7300-SER24	SDI signal generation
FOCUS ASSIST	LV5300-SER25	LV5350-SER25	LV7300-SER25	Focus assist display
LAYOUT (Custom layout)	LV5300-SER26	LV5350-SER26	LV7300-SER26	Custom layout function
TALLY	LV5300-SER27	LV5350-SER27	LV7300-SER27	Talley display
4K / 12G-SDI	LV5300-SER28	LV5350-SER28	LV7300-SER28	4K(12G-SDI/6G-SDI/3G-SDI Dual)
EXTEND VECTOR	LV5300-SER40	LV5350-SER40	LV7300-SER40	RGB Vector , YCbCr Vector

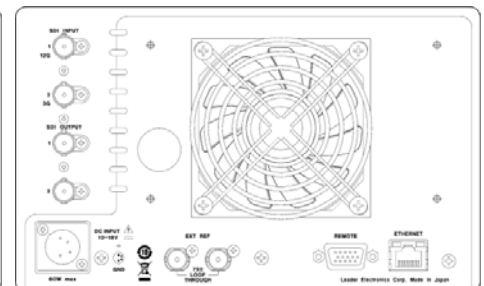
ZEN SERIES REAR PANEL



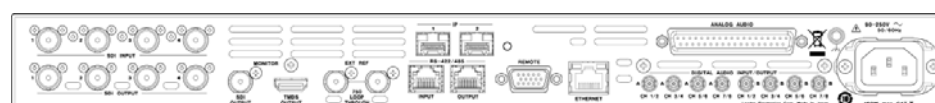
LV5600 REAR PANEL



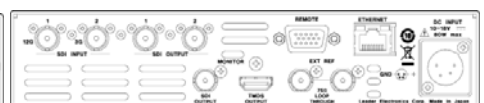
LV5300 REAR PANEL



LV5350 REAR PANEL



LV7600 REAR PANEL



LV7300 REAR PANEL

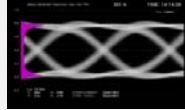
LV5600-SER01 LV7300-SER01

SDI INPUT

LV5600-SER02 LV7300-SER02

SDI INPUT WITH EYE PATTERN

The LV5600-SER01 and LV7300-SER01 options add SDI inputs to the product.
The LV5600-SER02 and LV7300-SER02 options offer SDI inputs with EYE pattern and Jitter functions.
NOTE: The LV5300 comes standard with EYE, and EYE features are not available on the LV5350.



EYE pattern display with histogram

LV5600-SER03 LV7600-SER03

DIGITAL/ANALOG AUDIO

LV5600-SER04 LV7600-SER04

DOLBY E DECODING FUNCTION

The LV5600-SER03 and LV7600-SER03 supports AES/EBU Audio and Analog Audio in/out. Features include audio bars, lissajous, surround, and loudness displays as well as audio error reporting. Additionally LV5600-SER04 / LV7600-SER04 option is installed, Dolby E, Dolby Digital, Dolby Digital Plus can be decoded and displayed.

LV5600-SER05 LV7600-SER05

IP INPUT (SMPTE ST 2022-6, SMPTE 2110-20)

LV5600-SER05/LV7600-SER05 are IP interface options for LV5600 / LV7600, supporting SMPTE ST 2022-6, SMPTE 2110-20/-30/-40, NMOS IS-04 and IS-05 for 3G/HD video. Input interface : SFP+ DLC/DLC connector x 2. (SFP+ module for IP interface required.)

LV5300-SER11 LV5350-SER11

BATTERY IDX

LV5300-SER12 LV5350-SER12

BATTERY ANTON BAUER

LV5300-SER11/LV5350-SER11

Battery mount adapter for V mount Battery



For LV5300/LV5350

LV5300-SER12/LV5350-SER12

Battery mount adapter for Anton Bauer battery

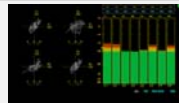


For LV5300/LV5350

LV5300-SER20 LV5350-SER20 LV7300-SER20

AUDIO DISPLAY FUNCTION

LV5300-SER20, LV5350-SER20, LV7300-SER20 provide Lissajous, and surround displays, in addition to monitoring channel levels and errors such as mutes or clicks.



Audio display

LV5300-SER21 LV5350-SER21 LV7300-SER21

CLOSED CAPTION

LV5300-SER21, LV5350-SER21, LV7300-SER21 decode and display closed caption of CEA-608/CEA-708, Teletext and OP47 subtitle with rendering on the picture.

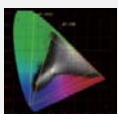


Closed caption display

LV5300-SER22 LV5350-SER22 LV7300-SER22

CIE CHART DISPLAY FUNCTION

LV5300-SER22, LV5350-SER22, LV7300-SER22 enable support for ITU-R BT.601, ITU-R BT.709, and ITU-R BT.2020 colorimetry. These options feature both CIE 1931 (xy) display and CIE 1976 (u'v') displays.



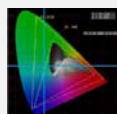
xy chromaticity Display



u'v' chromaticity Display



xy Chromaticity Color Display



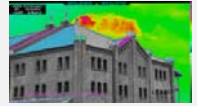
Cross cursor display

LV5600-SER23 LV7600-SER23

LV5300-SER23 LV5350-SER23 LV7300-SER23

HDR FUNCTION

LV5600-SER23, LV7600-SER23, LV5300-SER23, LV5350-SER23, LV7300-SER23 enable complete monitoring of the luminance levels of HDR signals, with support for HLG, PQ, and S-Log 3 as specified in ITU-R BT.2100. Luminance levels are shown in nits and cd/m2, accounting for the OOTF.



HDR zone display

LV5600-SER24 LV7600-SER24

LV5300-SER24 LV5350-SER24 LV7300-SER24

SDI SIGNAL GENERATION FUNCTION

LV5600-SER24, LV7600-SER24, LV5300-SER24, LV5350-SER24, LV7300-SER24 options provide HD SDI test pattern generation for 2K-HD/3G and 4K-3G quad/12G SDI formats. Please note, for 12G-SDI test signals, both the 4K and 12G-SDI options are required. (LV5600-SER28/LV5600-SER29, LV7600-SER28/LV7600-SER29, LV5300-SER28, LV5350-SER28, LV7300-SER28)

LV5600-SER25 LV7600-SER25

LV5300-SER25 LV5350-SER25 LV7300-SER25

FOCUS ASSIST FUNCTION

LV5600-SER25, LV7600-SER25, LV5300-SER25, LV5350-SER25, LV7300-SER25 enable focus detection, using a new algorithm optimized for high resolution images. Focus can easily be adjusted with sensitivity even in low contrast scenes.



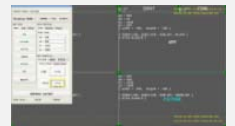
Focus Assist
(Green indicates focus)

LV5600-SER26 LV7600-SER26

LV5300-SER26 LV5350-SER26 LV7300-SER26

CUSTOMIZED LAYOUT FUNCTION

LV5600-SER26, LV7600-SER26, LV5300-SER26, LV5350-SER26, LV7300-SER26 enables both the location and size of displays such as waveform, vector, picture to be customized by the user. With display assignment, any given signal can also be rendered in up to 4 different views.



Customized layout display

LV5600-SER27 LV7600-SER27

LV5300-SER27 LV5350-SER26 LV7300-SER27

TALLY DISPLAY FUNCTION

LV5600-SER27, LV7600-SER27, LV5300-SER27, LV5350-SER27 and LV7300-SER27 enable remote tally display. In the LV5600 and LV7600, camera ID, iris and tally are available via RS - 422/485 connectors.



ID/Iris/Tally display

LV5600-SER28 LV7600-SER28

LV5300-SER28 LV5350-SER28 LV7300-SER28

4K FORMAT

LV5600-SER29 LV7600-SER29

12G-SDI

LV5600/LV7600

LV5600/LV7600 supports 4K formats of 3G-SDI dual and quad-link, HD-SDI quad link when the LV5600-SER28 or LV7600-SER28 is installed. LV5600 SER29/ LV7600-SER29 is required for 4K 12G SDI.

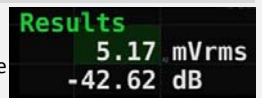
LV5300/LV5350/LV7300

LV5300/LV5350/LV7300 supports 4K 12G-SDI (single link) when LV5300-SER28, LV5350-SER28, or LV7300-SER28 is installed.

LV5600-SER30 LV7600-SER30

VIDEO NOISE METER

This is measuring the video noise included in the intensity signals or RGB signals of SDI signals. A window for measuring noise can be set. Even when the video levels are not flat due to the effects of the lens or the like, you can select a flat area for making measurements.



Noise meter display

LV5490

4K 12GSDI 3GSDI HDSDI SDSDI EYE

MULTI WAVEFORM MONITOR

4K Support

The LV5490 is a multi-waveform monitor compatible with 3G-SDI dual link or quad link and 4K video format (4096 × 2160, 3840 × 2160) with HD-SDI quad-link and 12 G-SDI. The LV5490 supports both 2-SAMPLE INTERLEAVE DIVISION and SQUARE DIVISION 4K transmissions.



■ Option sold separately

Model number	Model name
LV5490SER01	SDI INPUT
LV5490SER02	SDI INPUT / EYE
LV5490SER03	DIGITAL AUDIO
LV5490SER04	FOCUS ASSIST
LV5490SER05	CIE DIAGRAM
LV5490SER06	12G-SDI INPUT
LV5490SER07	HDR
LV5490SER08	IP (NMI)
LV5490SER09	12G-SDI EYE
LV5490SER10	NOISE METER

Display size: 9 inches. Dimensions (WHD mm): 223x172x360 (4 U Rack Height)

LT4610

4K 12GSDI 3GSDI HDSDI SDSDI PTP GPS

SYNC GENERATOR

Multiple outputs, GPS, Timecode, Dual power supply

The LT4610 is a sync generator capable of generating triple-rate SDI (3G-SDI / HD-SDI / SD-SDI) signals. This generator features dual redundant power supplies for maximum reliability. Its SDI, 6 analog black sync, and audio word clock signal output can be synchronized. Furthermore, the genlock function has the STAY IN SYNC function that holds phase when an abnormality occurs in the input signal, making it possible to build a highly stable system.



Dimensions (WHD mm): 482x44x400 (1U size type)

■ Option sold separately

Model number	Model name
LT4610SER01	GPS/TIME CODE
LT4610SER02	12G-SDI
LT4610SER03	PTP

LT4600A

3GSDI HDSDI SDSDI

MULTI FORMAT VIDEO GENERATOR

The LT4600A multi-format video generator is a compact, 1U half-rack size SDI video signal generator that supports 3G-SDI, HD-SDI, and SD-SDI.



LT4448

CHANGEOVER

3GSDI HDSDI SDSDI

LTC compliant for LT4610 / LT4611 / LT4600A

The LT4448 is equipped with 11 input / output (PRIMARY, BACKUP, OUTPUT), LTC, and adopts 2 input switching relays and 9 electronic switches. SDI, NTSC / PAL black burst, HD Tri-level Sync, AES / EBU digital audio, word clock, and LTC signals are supported. Faults are easily identified on the LED panel. The power supply is duplexed, with alarm notification of faults, and SNMP is also supported. Designed to be used in combination with LT4610, LT4611, LT4600A.



Dimensions (WHD mm): 426x44x400 (1U size type)



Combination of LT4610 and LT4448



Combination of LT4600A and LT4448

LV5770A

3GSDI HDSDI SDSDI EYE

MULTI MONITOR

3G HD Waveform Monitor

The LV5770A is a multi-waveform monitor allowing customization through options to efficiently meet any need. The LV5770A provides high accuracy measurement of 3G-SDI, HD dual link, HD-SDI, and SD-SDI signal formats.



■ Option sold separately

Model number	Model name
LV5770SER08	SDI INPUT
LV5770SER09A	SDI INPUT / EYE
LV5770SER41	DIGITAL AUDIO (Loudness function)
LV5770SER42	ANALOG AUDIO
LV5770SER43	DIGITAL AUDIO (Loudness function: 8ch bar graph)
LV5770SER03A	TRI SYNC/COMPOSITE Frequency deviation OP SDI Measure frequency deviation

Display size: 7 inches. Dimensions (WHD mm): 215x133.4x435 (3U Rack Height)

LT4611

4K 12GSDI 3GSDI HDSDI SDSDI PTP GPS

SYNC GENERATOR

Flexible Sync Generator, Dual power supply

LT4611 also offers a redundant power supply design for reliability. Standard features include the genlock function, 3 line analog black sync signal output, and audio word clock signal output. Other functions can be added to this sync generator as options, allowing the unit to flexibly match the features of the LT4610 as needed.



Dimensions (WHD mm): 482x44x400 (1U size type)

■ Option sold separately

Model number	Model name
LT4610SER01	GPS/TC
LT4610SER02	12G-SDI
LT4610SER03	PTP
LT4611SER21	SYNC 3 OUT ADD
LT4611SER22	SDI OUTPUT
LT4611SER23	AUDIO OUTPUT

SB-4024-A /SB-4027



4K Conversion Board

The SB-4024-A / SB-4027 is a high quality, multi-function, space-saving cross converter board that solves common problems in 4K HDR production sites. It is a converter board that supports resolution conversion, format conversion, and color gamut conversion between 4K and HD inputs and outputs. (SB-4027 supports 12G-SDI)



VB 440



High Performance IP Probe - Appliance

The VB440 40 Gigabit IP probe provides a breakthrough for the monitoring and analysis of high-bitrate broadcast media traffic as defined in ST2110 and ST2022-6 for core broadcasting networks, production studios, master control centers and outside broadcast vehicles and venues.

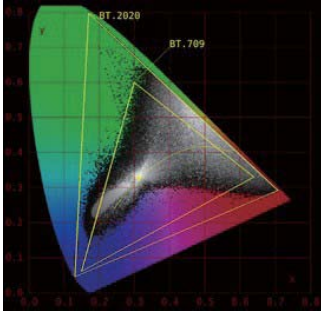
4K IP HD IP



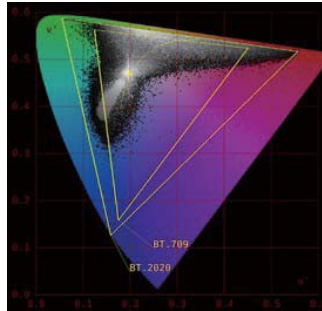
Technical Information

■ CIE chart (Applicable models: Zen series, LV5490)

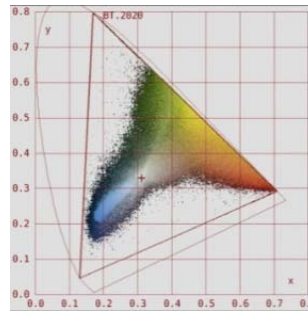
The CIE chart is a chromaticity diagram display function which represents ITU-R BT.601, ITU-R BT.709, ITU-R BT.2020 color spaces. Both CIE 1931(xy) and CIE 1976(u'v') modes are supported. Multiple color spaces can be shown on a single chromaticity diagram, allowing content to be verified in BT.2020 space even when beyond the displayed color area of BT.709 equipment. Colors are represented either as the full chromaticity coordinate space, or superimposed on the frame data shown on the color chart. Individual points may be directly measured or with CineLite Advance, the point marker and the chromaticity value is automatically indicated on the cursor in the picture monitor display.



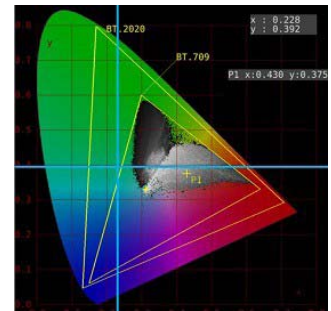
xy coordinate chart



u'v' coordinate chart



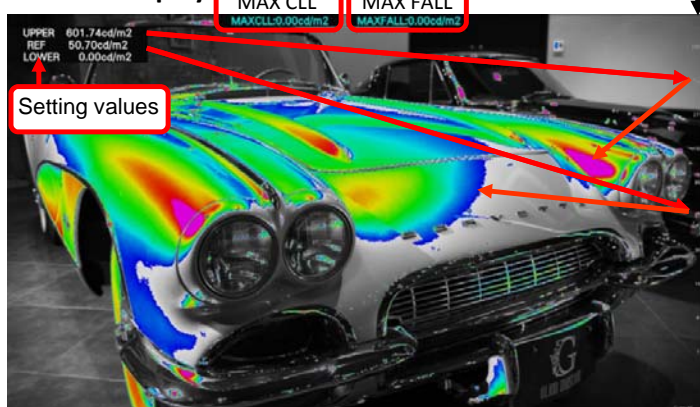
xy coordinate color chart



Cursor points shown in blue

■ HDR (Applicable models: Zen series, LV5490)

HDR Zone display



HDR Zone scale

[cd/m²]

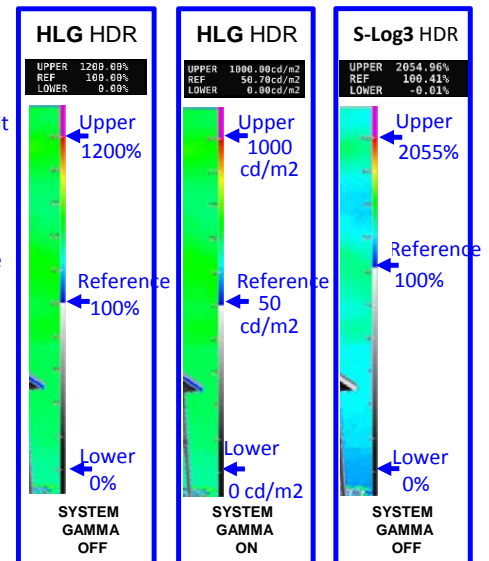
Upper limit
1,000
HMR area

Reference
100

SDR area

Lower limit
0

- SDR content is shown in monochrome, HDR in color, depending on brightness
- Content over the upper limit is colored magenta
- Setting values can be user defined for easy grading to a particular luminance



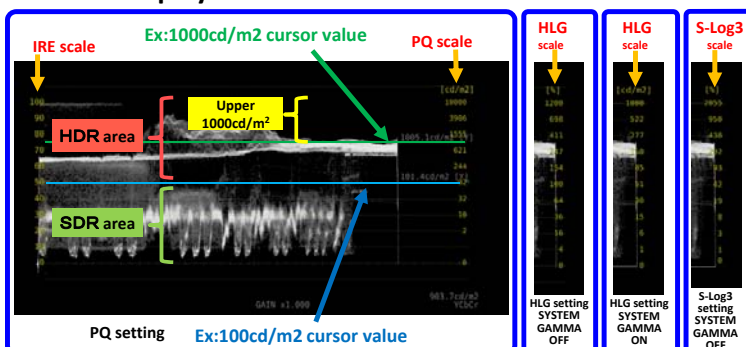
HDR point measurement

PQ setting	P1(S: 884,L: 261)3243.6cd/m ²
	(sample, line number, candela)
HLG setting	P1(S: 884,L: 261) 623.9%
SYSTEM GAMMA OFF	
HLG setting	P1(S: 884,L: 261) 456.1cd/m ²
SYSTEM GAMMA ON	
S-Log3 setting	P1(S: 884,L: 261) 809.1%
SYSTEM GAMMA OFF	

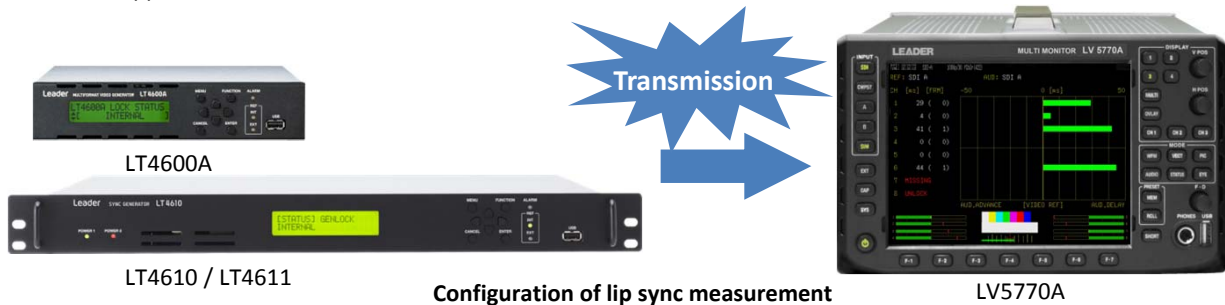
- Cursor can be freely located for point measurement
- Up to 3 points can be measured at the same time



HDR waveform display

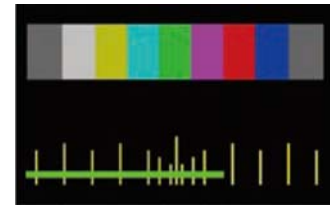


■ LIP SYNC (Applicable models: Zen series, LV5770A, LT4610, LT4611, LT4600A)



Configuration of lip sync measurement

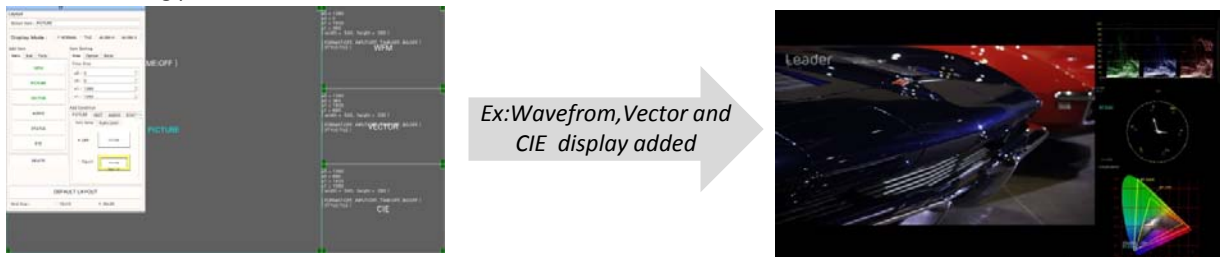
- Use to troubleshoot delays between audio and video signals
- Resolution: 1 ms
- Sample configurations for measurement:
LV5770A and LV5770SER08/09A, LV5770SER41/43 with LT4610 / LT4611 or LT4600A.
Alternately, LV5600 / LV7600 with LV5600-SER03/LV7600-SER03 (DIGI/ANA AUDIO)
LV5600-SER24/LV7600-SER24 (TSG), or LV5300/LV5350/LV7300 with LV5300-SER20/
LV7300-SER20 (AUDIO) · LV5300-SER24/LV7300-SER24 (TSG).



Lip sync measuring pattern

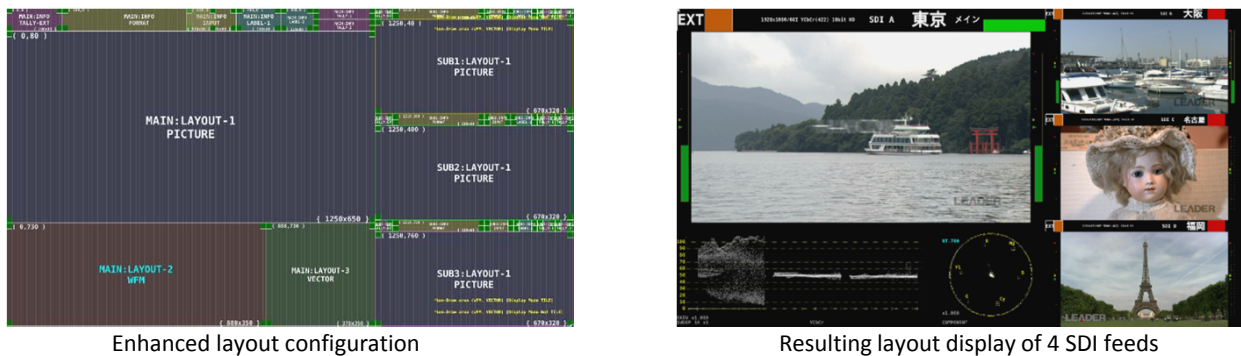
■ Custom layout (Applicable models: Zen series, LV5490)

Using the touch screen or mouse input, multiple measurement displays can be sized and located on the screen to meet the specific needs of the monitoring position.



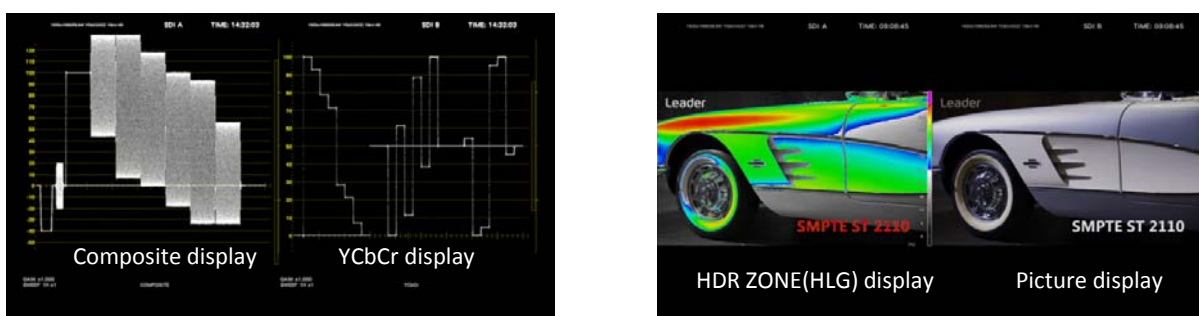
■ Customized layout (Applicable models: LV5600, LV7600)

Up to 4 channels can be displayed at the same time with simultaneous mode, simplifying monitoring of multiple feeds.



■ Display assignment function (Applicable models: LV5600, LV7600)

One input signal can be assigned to multiple independent channel labels, whether SDI or IP.
(Only available at SD/HD/3G-A/3G-B-DL in the SDI System)



2 displays of 1 input signal

■ Loudness display (Applicable models: LV5600, LV7600 and LV5770A)

- Variety of triggers including panel, remote, time code, and mute
- Chart function to display loudness over time
- Both absolute and relative values are reported
- Loudness measurement of ARIB / EBU / ATSC / ITU-R BS.1770
- Logging of integrated loudness value

Selectable measurement time
2min/10min/30min/1h/2h

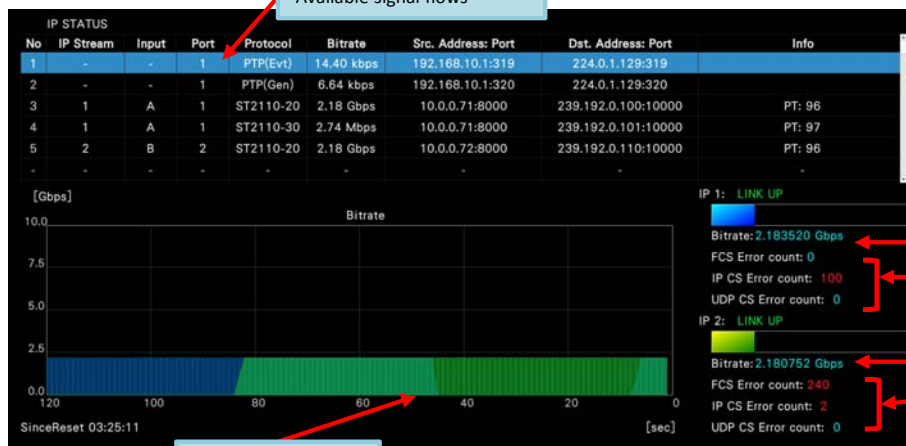


LV5770A display

■ IP function (Applicable models: LV5600, LV7600)

Both SMPTE ST2022-6 and SMPTE 2110-20 based real-time IP transport at up to 2K image formats are becoming more common. To ensure quality in these systems, transmission problems such as packet loss, checksum errors, as well as jitter can be monitored. Available media flows can also be identified by protocol and addressing. Finally, both IP and SDI feeds can be simultaneously displayed in standard views such as waveform or picture to ensure operations in hybrid facilities.

IP Measurements



Available signal flows

Traffic graph vs time

Bit rate (IP1 input)

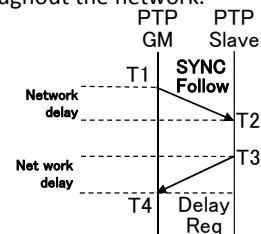
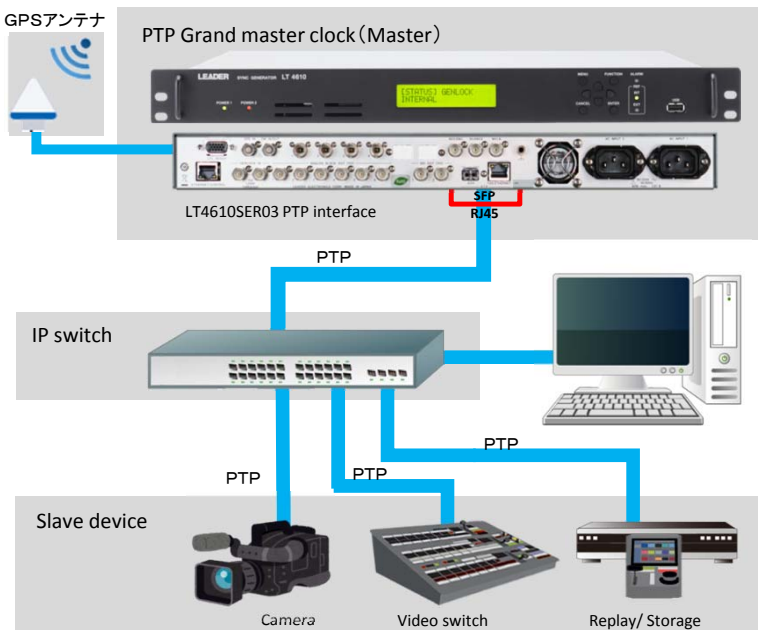
Checksum error (IP1 input)
FCS: Frame checksum
IP CS: IP checksum
UDP CS: UDP checksum

Bit rate (IP2 input)

Checksum error (IP2 input)
FCS: Frame checksum
IP CS: IP checksum
UDP CS: UDP checksum

■ PTP function (Applicable models: LT4610, LT4611)

PTP is a time synchronization protocol as defined in IEEE1588. Messages are exchanged in time-stamped IP packets between master clocks, slaves, and other timed devices in order to accurately determine time throughout the network.



$$\begin{aligned} [(T2-T1)-(T4-T3)]/2 &= \text{Offset time} = -2 \text{ seconds} \\ [(T2-T1)+(T4-T3)]/2 &= \text{Delay time} = 1 \text{ second} \end{aligned}$$

	Master time	Stamp		PTP message		Stamp	Slave time	Slave working time
1	0:00:10	T1	→	SYNC			0:00:10	0:00:12
2	0:00:11			Follow_Up	→	T2	0:00:11	0:00:13
3	0:00:22				←	T3	0:00:22	0:00:24
4	0:00:23	T4	←	DELAY_REQ			0:00:23	0:00:25
5	0:00:24		→				0:00:24	0:00:26
6	0:00:25			DELAY_RESP	→		0:00:23	0:00:25
7	0:00:30	T1	→	SYNC			0:00:28	0:00:30
8	0:00:31			Follow_Up	→	T2	0:00:29	0:00:31
9	0:00:42				←	T3	0:00:40	0:00:42
10	0:00:43	T4	←	DELAY_REQ			0:00:41	0:00:43
11	0:00:44		→				0:00:42	0:00:44
12	0:00:45			DELAY_RESP	→		0:00:43	0:00:45

ACCESSORIES



LR2560 RACK-MOUNT ADAPTER

Two waveform monitors can be mounted side by side on a 19-inch EIA standard rack.

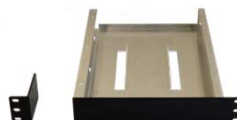
Applicable model: LV5600



LR2530 RACK-MOUNT ADAPTER

Two waveform monitors can be mounted side by side on a 19-inch EIA standard rack.

Applicable model: LV5300, LV5350



LR2731 RACK-MOUNT ADAPTER

One rasterizer can be mounted on a 19-inch EIA standard rack with a blank panel on another side.

Applicable model: LV7300



LR2732 RACK-MOUNT ADAPTER

Two rasterizers can be mounted side by side on a 19-inch EIA standard rack.

Applicable model: LV7300



(Blank Panel Shown Right Side)

LC2565 BLANK PANEL

For use with a single waveform monitor and the LR2560.

Applicable model: LV5600



LC2535 BLANK PANEL

For use with a single waveform monitor and LR2530.

Applicable model: LV5350



GST90A12 AC ADAPTER

AC adapter and AC cord for applicable models.

Sold separately except for LV7300.

Applicable model:

LV5300/LV5350/LV7300



LC-2183 LTC CABLE

Conversion cable consists of 1(one) 25 pin D-sub LTC connector and 2 (two) 15 pin D-sub LTC connector for PRIMARY/ BACKUP, and 3 (three) XLR connectors for LTC output (1.5m)

Applicable model: LT4448



LC2141 SFP TRANSCEIVER RJ-45

1000BASE-T

Applicable model: LT4610, LT4611



LC2144 SFP+ TRANSCEIVER OPTICAL (MMF)

850nm, 10GBASE-SR/SW

Maximum distance: 300m

Applicable model: LV5600, LV7600,

LT4610, LT4611



LC2145 SFP+ TRANSCEIVER OPTICAL (SMF)

1310nm, 10GBASE-LR/LW

Maximum distance: 10,000m

Applicable model: LV5600, LV7600,

LT4610, LT4611



AU-117 ANTENNA

Connector: TNC-J

Gain: 30dB

Impedance: 50Ω

Applicable model: LT4610, LT4611

ACCESSORIES LIST

PRODUCT NAME	MODEL	APPLICABLE MODEL	REMARKS
RACK-MOUNT ADAPTER	LR2560	LV5600	Two units can be mounted side by side in a 3U space on a 19-inch EIA rack
RACK-MOUNT ADAPTER	LR2530	LV5350	Two units can be mounted side by side in a 3U space on a 19-inch EIA rack
RACK-MOUNT ADAPTER	LR2731	LV7300	One rasterizer can be mounted in a 1U space on a 19-inch EIA rack. Same rack used for Left or Right mount.
RACK-MOUNT ADAPTER	LR2732	LV7300	Two rasterizers can be mounted side by side in a 1U space on a 19-inch EIA rack
RACK-MOUNT ADAPTER	LR2490	LV5490/LV5480	Two waveform monitors can be mounted side by side in a 4U space on a 19-inch EIA rack
RACK-MOUNT ADAPTER	LR2770A	LV5770A	Two waveform monitors can be mounted side by side in a 3U space on a 19-inch EIA rack
CABINET	LR2404A	LV5770A	Without handle or stand
CABINET	LR2427B	LV5770A	With carrying handle and tilt stand
RACK-MOUNT ADAPTER	LR2478	LT4600A	Two units can be mounted side by side in a 1U space on a 19-inch EIA rack
RACK-MOUNT ADAPTER	LR2481	LT4600A	One units can be mounted in a 1U space on a 19-inch EIA rack. Same rack used for Left or Right mount.
BLANK PANEL	LC2565	LV5600	
BLANK PANEL	LC2535	LV5300/LV5350	
BLANK PANEL	LC2190	LV5490/LV5480	
BLANK PANEL	LC2170	LV5770A	
SFP TRANSCEIVER RJ-45	LC2141	LT4610	1000BASE-T
SFP+ TRANSCEIVER OPTICAL	LC2144	LV5600/LV7600/LT4610/LT4611	850nm, 10GBASE-SR/SW
SFP+ TRANSCEIVER OPTICAL	LC2145	LV5600/LV7600/LT4610/LT4611	1310nm, 10GBASE-LR/LW
AC ADAPTER	GST90A12	LV5300/LV5350/LV7300	Separately sold: LV5300/LV5350, Included with LV7300
LT4610SER02 GPS ANTENNA	AU-117	LT4610/LT4611	For LT4610SER01
LTC CABLE		LT4448	Conversion cable consists of 1(one) 25 pin D-sub LTC connector and 2 (two) 15 pin D-sub LTC connector for PRIMARY/BACKUP, and 3 (three) XLR connectors for LTC output (1.5m)

Specified product specifications are subject to change without notice. February 22, 2019

Leader Electronics Corporation

2-6-33 Tsunashima-higashi, Kohoku-ku, Yokohama 223-8505 Japan

Tel: +81-45-541-2123

URL: www.leader.co.jp/en Email: sales@leader.co.jp

Floating Point Company Limited

Email: sales@floatingpoint.com.hk

Tel: (+852) 92739364

URL: www.floatingpoint.com.hk

**FLOATING
POINT**